

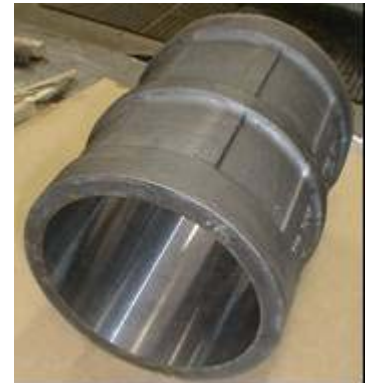
The Choice for Grinding Hard Materials

At Reparex our focus is on providing our customers with a one-stop-shop for wear resistant solutions. In many precision applications we have helped our customers by replacing abrasion resistant steels with precision ground monolithic ceramics, thermal spray coatings, brazed tungsten carbides or AeroTech Bonded ceramics. With our in-house machining and grinding capabilities we are able to modify existing parts to accept any specified coating or lining, which then can be ground to meet precision machine tolerances.



Large Capacity ID / OD and Surface Grinding

We are able to offer some unique large capacity capabilities for diamond grinding very hard materials. Our equipment is capable of grinding the ID and OD of pieces and has a completely separate head for surface grinding. This set-up allows us to complete both surface grinding and ID or OD work at the same time. Also, both the ID/OD and Surface grinding heads can be angled to allow us to complete chamfering work or work on conical pieces. The grinder table is 48" in diameter and the machine is capable of swinging parts as large as 48" in diameter. The unit is able to work up to a full 40" under the rail making our ability to handle large piece work quite unique.



Our Experience

We have deep project experience diamond grinding very hard materials including: Tungsten Carbides, High Alumina Ceramics, Reaction Bonded and Nitride Bonded Silicon Carbides, as well as the spectrum of thermal spray coatings. We have application know-how to match the correct diamond tooling to the characteristics of the wide variety of hard materials we are to offer. We are confident we can meet your specific application needs.

Precision Diamond Grinding Services

Grinding Equipment List

Schneider ID/ OD & Surface Grinder

- Vertical & horizontal Spindles
- 48" Rotary Table
- 40" Capacity Under the Rail



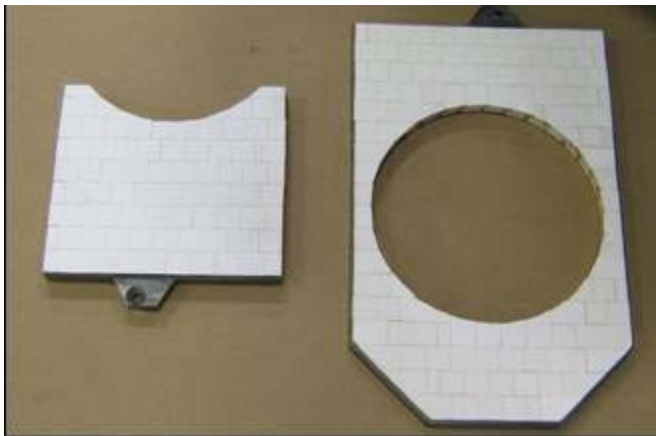
Thompson Surface Grinder

- Horizontal Spindle
- 24" x 72" Magnetic Chuck
- 16" Under the Wheel



Landis Universal Cylindrical Grinder

- 30" Diameter
- 120" Overall Length



REPAREX

WEAR RESISTANT COATINGS & LININGS

P.O. Box 705, Latrobe PA 15650

Ph: (724)-537-0444/ Fax (724) 537-0407/ Reparex@reparex.net